

Phone: 714 668 3660
 Fax: 714 668 1107
 Email: sales@allscape.net
 http://www.alllighting.com

INSTALLATION SHEET

Safety, Warnings and Suggestions

- ¹ Care should be taken not to position fixtures in locations where bare skin can come into contact with the potentially high temperatures on the lens.
- ² Avoid installing fixtures in locations where water collects and stands for prolonged periods.
- ³ Make sure that electrical power is disconnected before any work is performed.
- ⁴ All wiring and installation should meet local, state and national electrical codes.
- ⁵ This will ensure that the required airflow is maintained and the lens surface temperature is maintained.

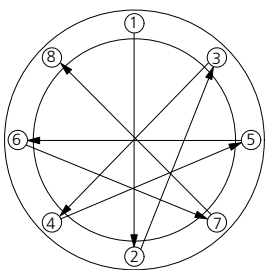
Maintenance

- ¹ Make sure that electrical power is disconnected before any work is performed on the fixture.
- ² Install correct lamp type and wattage when required.
- ³ Check that the inside of the housing is free of debris of any kind. Remove if found. This can obstruct the flow of air and increase the temperature on the lens surface.
- ⁴ Check that the gap between the lens ring and the casting that they fit in is clear of any obstruction. Clean if required. This can obstruct the flow of air and increase the temperature on the lens surface.

P#32A47876

© 2005 - 2009 ALLSCAPE. All rights reserved.
 ALLSCAPE is a registered trademark of Philips.

Due to a program of continuous improvement, ALLSCAPE reserves the right to make any variation in design or construction to the equipment described.

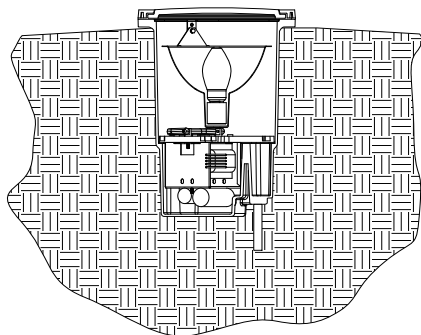


Use several rotations of the following sequence to tighten the lens ring socket head cap screws, to 50 in/lbs.

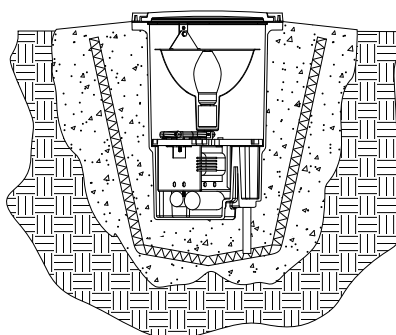
Mount Fixture as high above grade as possible to prevent debris and water standing on fixture surface.

Create an isolation barrier around the fixture to prevent rocks and foliage from interfering with light output.

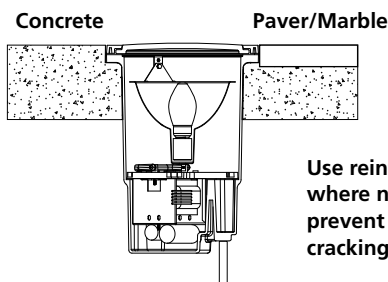
Add drainage media below and around fixture to prevent standing water.



SL-43 In Soil

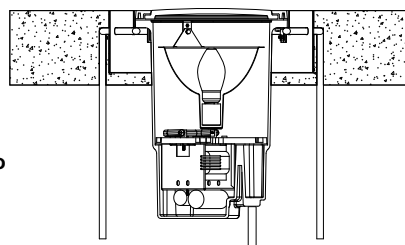


SL-43 In Soil With Concrete Base and Trim Ring



SL-43 In Concrete With Trim Ring

Use reinforcement where necessary to prevent concrete cracking.



SL-43 In Concrete With Grout Mask and Trim ring

1. Prepare the site with adequate excavation to install fixtures¹. Drainage media below fixture will enhance installation^{2,3}.

2. Remove lens ring and lens with gasket,⁴ reflector assembly and "D" shaped splice box cover plate and gasket.

3. Connect conduit to the 3/4" NPT openings in the splice compartment at the bottom of the fixture, using the appropriate thread sealing compound. Tighten to 15 ft-lbs. max.

4. Position fixture so it is flush or just above the installation area grade⁵ and orient the fixture with regard to architectural requirements to obtain the appropriate accent.

5. Make power and ground connections using provided waterproof wire nuts. It is recommended that RTV Silicone or other re-enterable water sealing compound be used to seal the conduit entry points⁷.

6. Reinstall "D" shaped splice box cover plate and gasket ensuring that all four (4) screws are securely tightened.⁴ Reinstall reflector assembly, install lamp⁸ and make aiming adjustments.

7. Install lens ring and lens with gasket⁴ IMPORTANT! A CRISS CROSS PATTERN IS REQUIRED TO ENSURE THAT A GOOD COMPRESSION SEAL IS MADE. If this is not accomplished the fixture could leak and be damaged. Tighten socket head cap screws gradually using multiple tightening steps to 50 in/lbs.