

WHD	B	08-039	JGB	8/21/08
WHD	C	09-065	ALD	8/4/09
WHD	D	10-137-006	ARG	3/16/11
APPR	REV	ISO DOC	BY	DATE

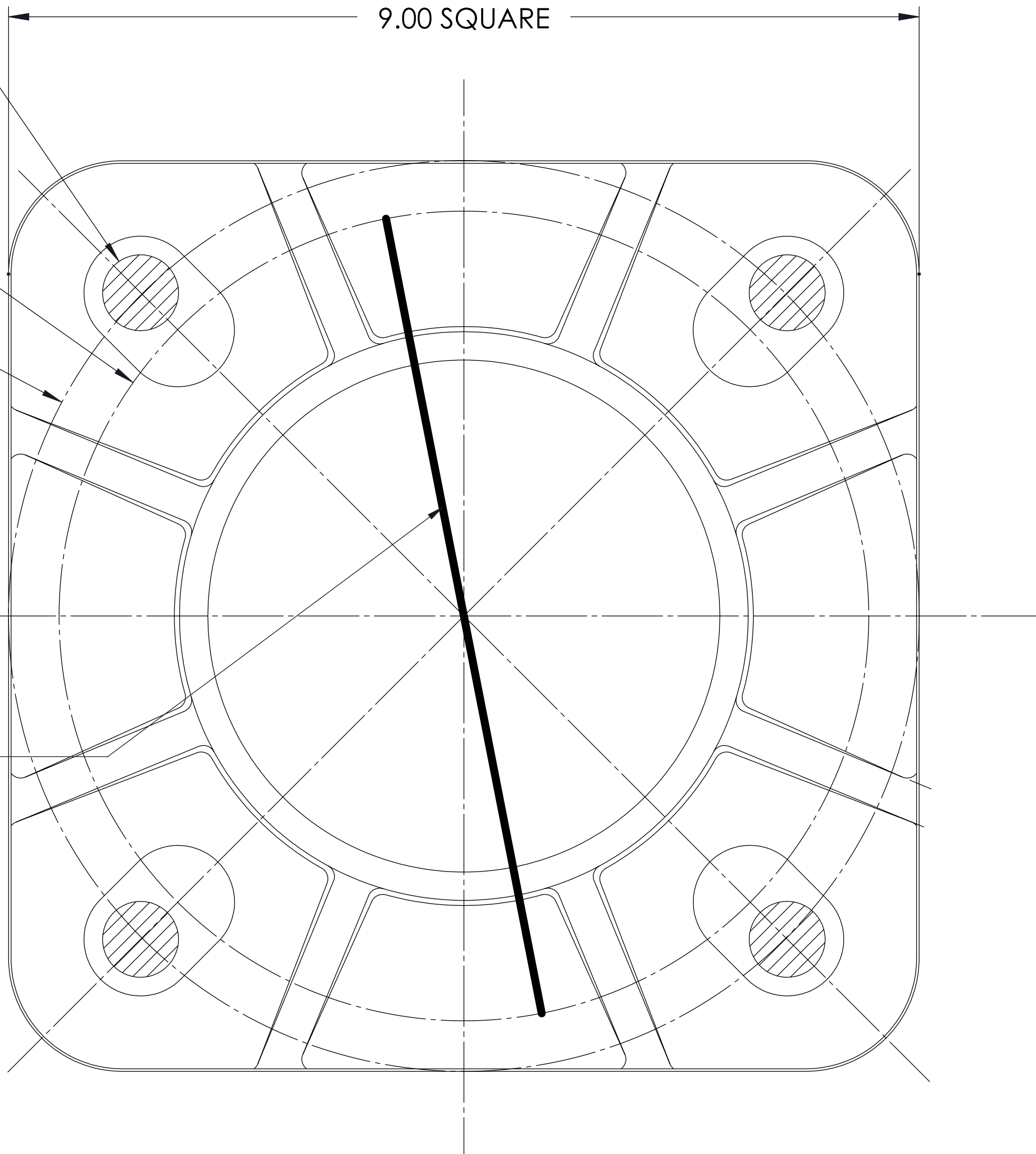
(4) ϕ 0.75
ANCHOR RODS

9.00 SQUARE

ϕ 8.00
B.C.

ϕ 9.00
B.C.

VERIFY BOLD LINE
IS 8" LONG



WARNING

**NOT TO SCALE
CONSULT FACTORY FOR
FULL SIZE TEMPLATE.**

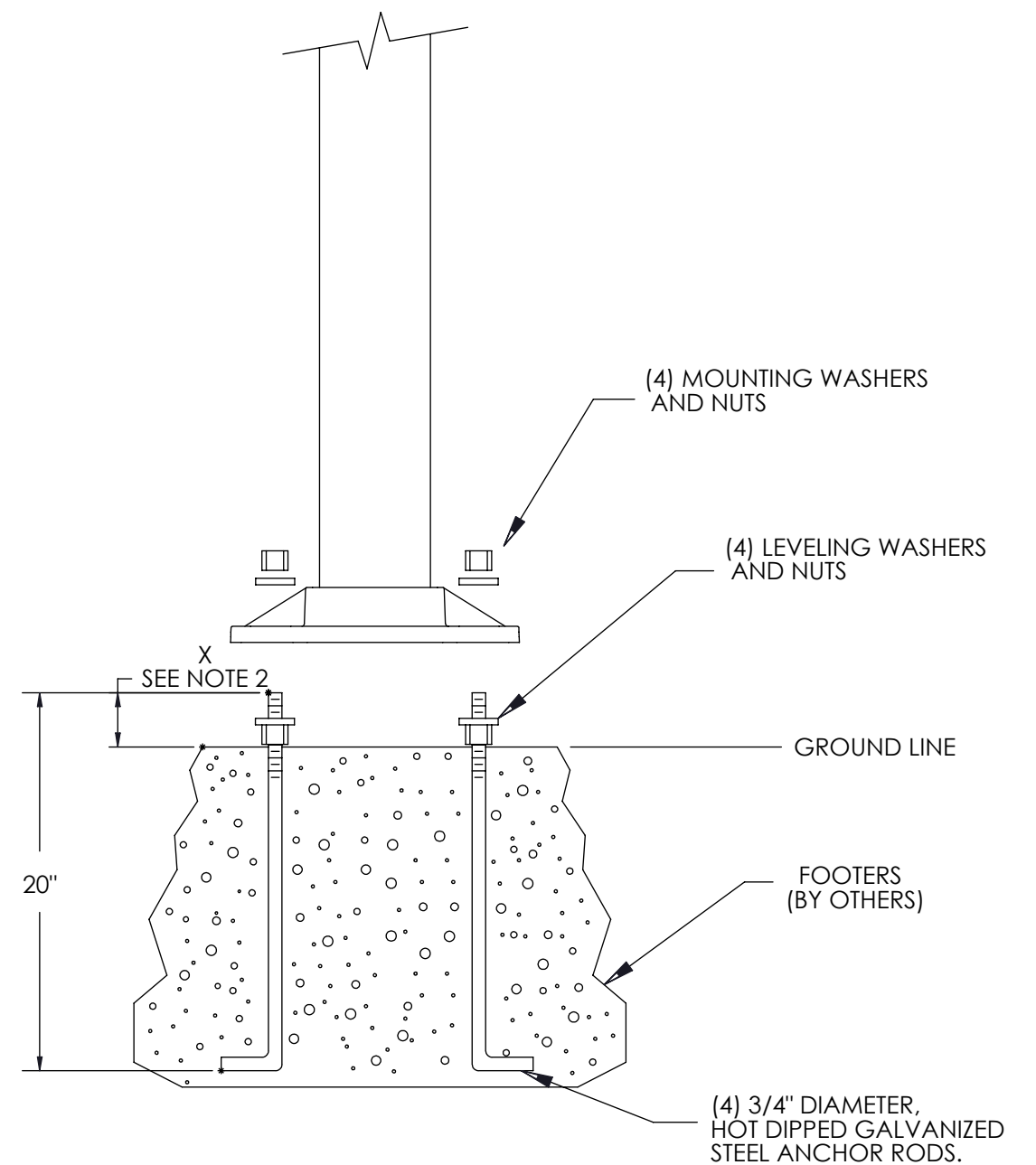
NOTES:
1. SUGGESTED BOLT CIRCLE: 9" DIAMETER.

2. PHILIPS RECOMMENDS USING LEVELING NUTS TO MOUNT THE POST BASE.

IF FOUNDATION IS NOT LEVEL, INCREASE "X" DIMENSION ACCORDINGLY WHEN USING LEVELING NUTS WITH WASHERS.

X = 2 3/4" WITH LEVELING NUTS.
X = 1 3/4" WITHOUT LEVELING NUTS.

3. IF USING GROUTING TO CONCEAL GAP BETWEEN BASE AND FOUNDATION, ALLOW FOR WATER DRAINAGE.



PHILIPS

100 Craftway, P.O. Box 128
Littlestown, Pennsylvania 17340-0128

CONFIDENTIAL: This drawing is confidential and proprietary to Philips and may not be reproduced in whole or in part without the express written consent of Philips. All rights reserved.
© 2011 by Philips Electronics.

TITLE: TEMP,P9400/P9500

UNLESS OTHERWISE SPECIFIED:
*ALL DIMENSIONS ARE IN INCHES.
*ALL THREADS ARE UNC-2B OR UNF-2B AFTER COATING.
*ALL THREADS ARE TO BE VERIFIED WITH A THREAD GAGE.

DRAWN BY:	K. A. RENNEN	DATE:	3/16/04
CHECKED BY:	B. DORON	DATE:	8/4/09
APPR BY:	E. HADDAD	DATE:	3/16/04

MATERIAL: 17 X 22 WHITE BOND PAPER,