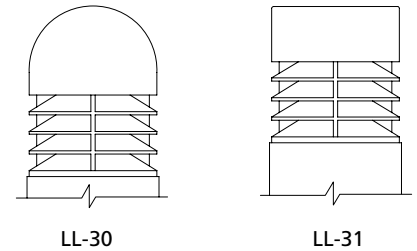


2930 South Fairview Street
 Santa Ana, CA 92704
 Phone: 714 668 3660
 Fax: 714 668 1107
 Email: sales@allscape.net

INSTALLATION SHEET

Safety, Warnings and Suggestions

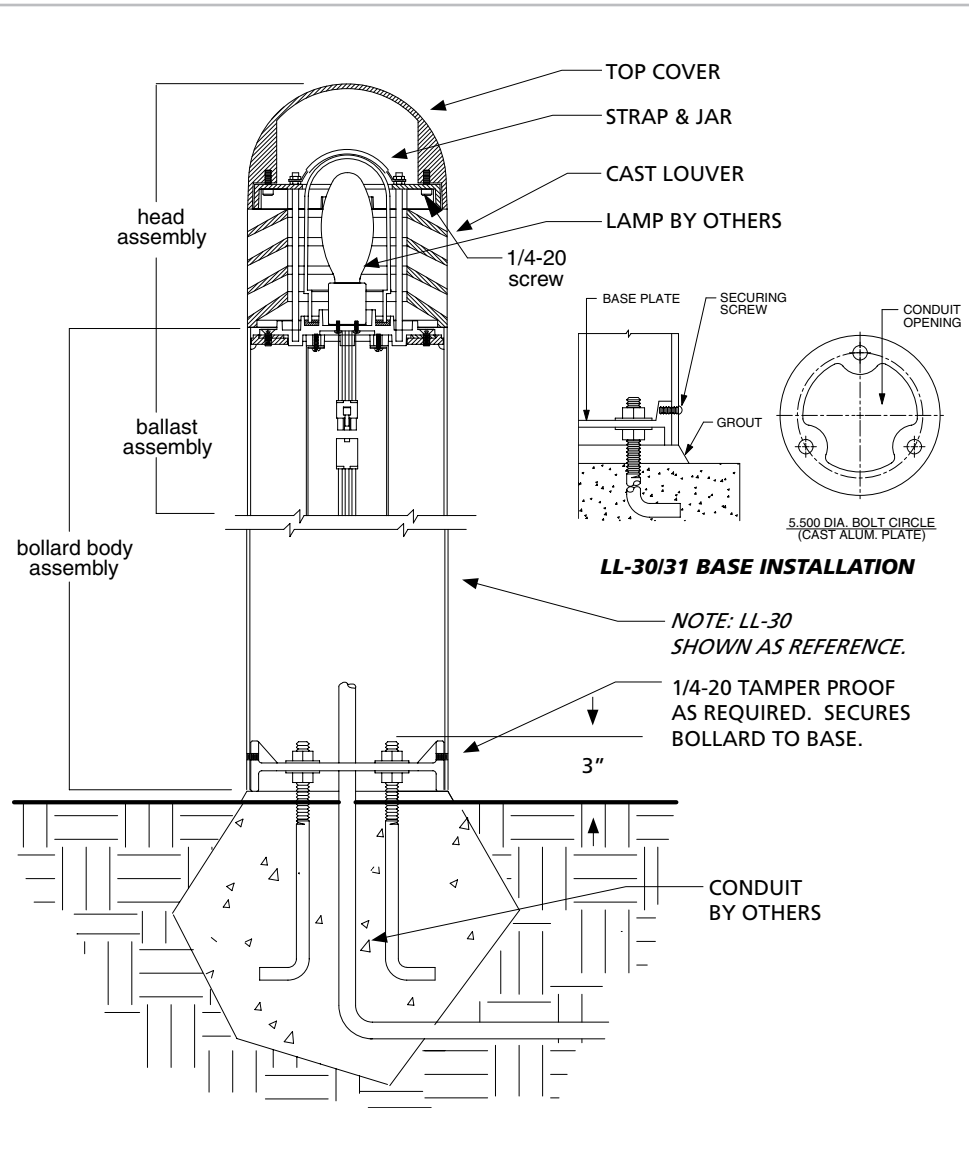
- ¹ **Care** should be taken not to position fixtures in locations where bare skin can come into contact with the potentially high temperatures on the lens.
- ² **Avoid** installing fixtures in locations where water collects and stands for prolonged periods.
- ³ **Make** sure that electrical power is disconnected before any work is performed.
- ⁴ **All** gaskets and sealing surfaces must be kept clean during installation.
- ⁵ **All** wiring and installation should meet local, state and national electrical codes.
- ⁶ **Install** correct lamp type and wattage.



P# 38709

© 2005 - 2008 ALLSCAPE. All rights reserved.
 ALLSCAPE is a registered trademark of Philips.

Due to a program of continuous improvement, ALLSCAPE reserves the right to make any variation in design or construction to the equipment described.



1. Prepare the site with adequate excavation and install the anchor bolts as per factory supplied template.

2. Remove the cast base from the bollard by removing the securing screws. Install the base to anchor bolts and level.

3. Connect supply wire to fixture wires, white to white, black to black and green to ground.

4. Take the bollard body assembly and install over the cast base and secure the body with the 1/4-20 tamper proof screws.

5. Remove the bollard top cap by loosening 2 screws under the cap lip and rotating to disengage the key slots.

6. Remove the glass jar by loosening the metal strap.

7. Install proper type and wattage lamp, replace the glass jar, and replace bollard cap and tighten screws securely.

8. To service ballast, remove bollard cap and glass jar. Remove louver stack, remove ballast assembly by removing (4) 10-24 screws (wiring includes quick disconnect) and replace parts as necessary. Reassemble in the opposite order.

NOTE: MAKE SURE BEFORE INSTALLING THE COMPONENTS, THAT THE GASKETS ARE PROPERLY SEATED.