

**Low Level Lighting**

**Landscape Accent**

**Parks**

**Walkways**



### Specifications



**Certifications** The fixture shall be ETL and CETL listed for wet location.

**Light Distribution** The luminaire shall meet the specified light distribution and footcandle levels with an internal optical system.

**Assembly** The fixture shall be factory pre-wired, with high temperature wire completely assembled and tested prior to shipment. Field installation to mounting base shall be accomplished without having to remove or disassemble any fixture components. Fixture shall be ETL listed "suitable for wet locations."

**Housing** The fixture housing shall be constructed from 1/8" aluminum 5052 sheet.

**Ballast** Ballast shall be readily accessible, removable and insulated. Quick disconnects are standard.

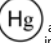
**Lens** Clear Tempered Glass.

**Optical Assembly** Provides precise directional beam control with vandal resistant optical system. Directional reflectors and cast aluminum face plate louvers offers the option of single beam or twin beams at either 90°, 180° or 270° orientation.

**Finish** BK-BZ-WH-GR-GY-NA baked enamel standard, other colors available.

**Mounting** Housing secured to cast aluminum base plate with tamper resistant hardware. Anchor base plate mounted with 4 anchor bolts.

<b>PROJECT</b>
<b>FIXTURE TYPE</b>
<b>CATALOG#</b>

 Some luminaires use fluorescent or high intensity discharge (HID) lamps that contain small amounts of mercury. Such lamps are labeled "Contains Mercury" and/or with the symbol "Hg." Lamps that contain mercury must be disposed of in accordance with local requirements. Information regarding lamp recycling and disposal can be found at [www.lamprecycle.org](http://www.lamprecycle.org)

## Product Order Guide

Series	Max Watts	Lamp Type	Voltage <sup>1</sup>	Aperatures <sup>3</sup>	Overall Height	Finish <sup>1</sup>	Options
LL-11	100 MH	E17	120	1 Single	30"	BZ Bronze	F Fusing
	150 HPS	E17	208	2L90 Twin @ 90°	36"	BK Black	FF Double Fusing
	42 CFT	CFT <sup>2</sup>	240	(see note)	42"	GR Green	EMG Emergency Battery Backup
			277	2L270Twin @ 270°	48"	WH White	
			2L180	Twin @ 180°		NA Natural Aluminum	
						GY Gray	
						CC Custom Color	
	Titan25WW	CUS3 <sup>4</sup>	120/277	Beam 25°		Warm White (3050K)	
	Titan25CW	CUS3 <sup>4</sup>	120/277	Beam 25°		Cool (Daylight) White (4700K)	
	Titan25FIX	CUS3 <sup>4</sup>	120/277	Beam 25°		Fixed Color Red, Green, Blue, Amber	

1 Consult factory for other colors and voltages

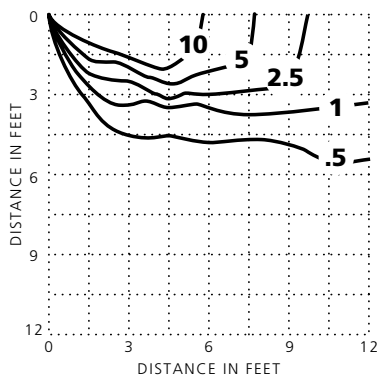
2 CF = single biax, CFQ = double biax, CFT = triple biax

3 The Aperture location on a Twin @ 90° and Twin @ 270 are not on the same horizontal plane. One of the Apertures will be lower than the other.

4 The CUS3 is a 25W Titan led from Lamina

## Example: LL-11-70MH-E17-120-2L-42-BZ

### Photometric Data



LL-11-70MH-1-36

Clear Lamp

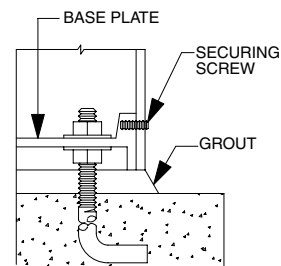
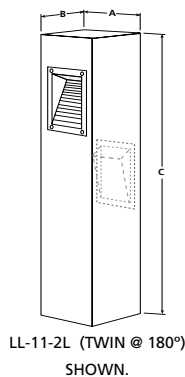
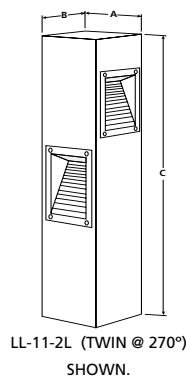
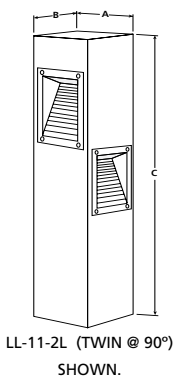
5,600 Lumens

36" Mounting Height

ISOLUX Curves—value in initial footcandles

### Luminaire Dimensions

Luminaire	A		B		C		Weight	
	Inch	mm	Inch	mm	Inch	mm	lbs.	kg
LL-11	8.0	203	8.0	203	48.0	1219	40	18.1
	8.0	203	8.0	203	42.0	1067	38	17.2
	8.0	203	8.0	203	36.0	914	36	16.3



Anchor Bolt Size  
(4) 1/2" x 12" x 3"

