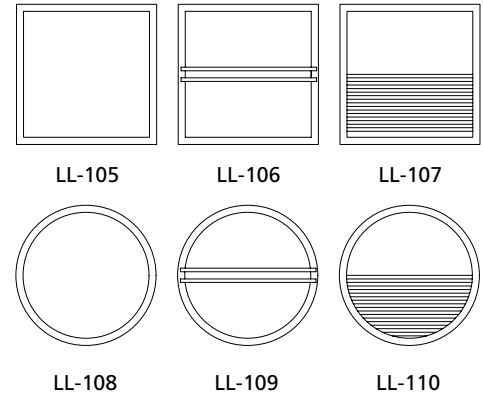


INSTALLATION SHEET

Safety, Warnings and Suggestions

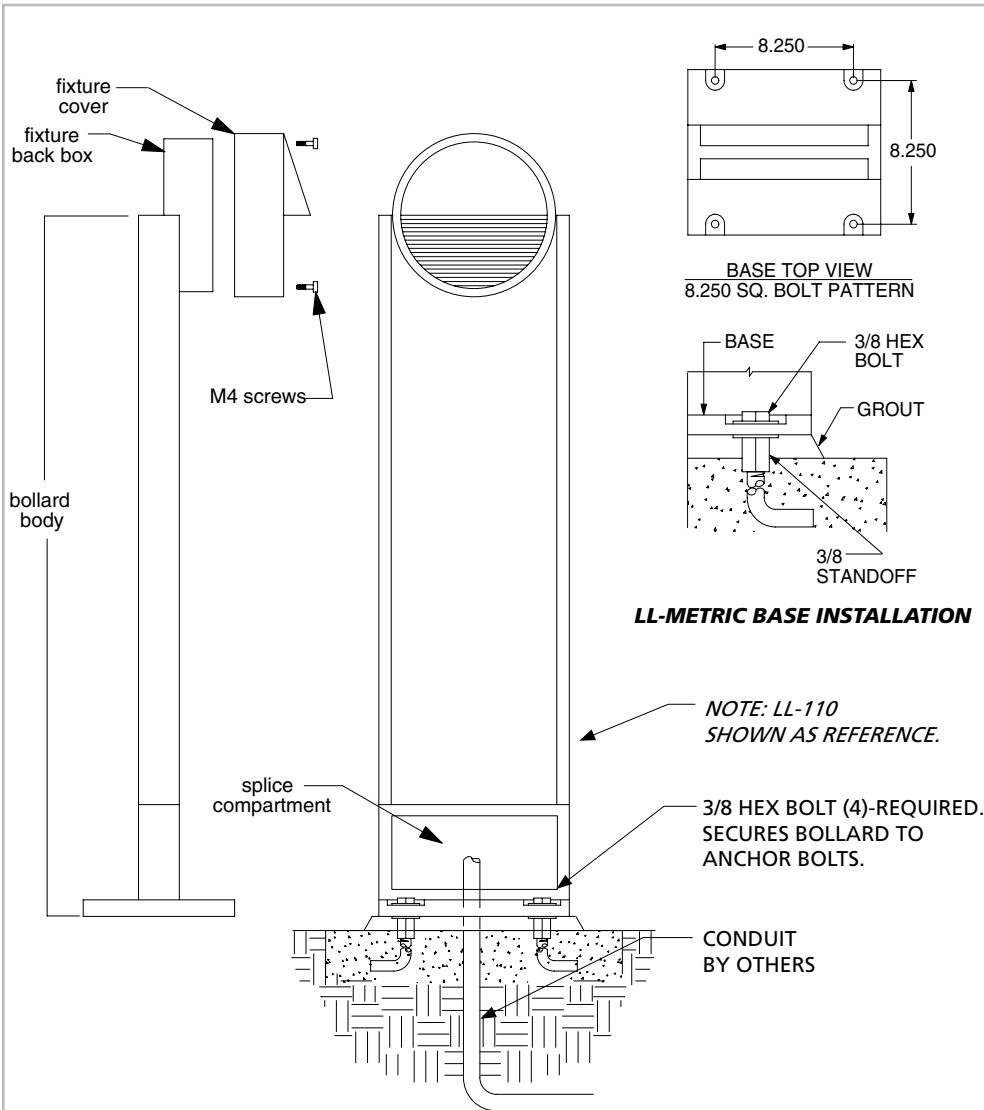
- 1 **Care** should be taken not to position fixtures in locations where bare skin can come into contact with the potentially high temperatures on the lens.
- 2 **Avoid** installing fixtures in locations where water collects and stands for prolonged periods.
- 3 **Make** sure that electrical power is disconnected before any work is performed.
- 4 **All** gaskets and sealing surfaces must be kept clean during installation.
- 5 **All** wiring and installation should meet local, state and national electrical codes.
- 6 **Install** correct lamp type and wattage.



P# 38713

© 2005 - 2008 ALLSCAPE. All rights reserved.
 ALLSCAPE is a registered trademark of Philips.

Due to a program of continuous improvement, ALLSCAPE reserves the right to make any variation in design or construction to the equipment described.



1. Prepare the site with adequate excavation and install the anchor bolts as per factory supplied template.
 2. Take the bollard body and install to the anchor bolts and level. Secure the base with (4)-3/8 hex bolts.
 3. Remove the lens and the cover from the bollard by loosening the metric cap head screws. see detail drawing.
 4. Install the proper lamp.
 5. Replace the lens and cover with the cap screws.
- NOTE: MAKE SURE BEFORE INSTALLING THE LENS, THAT THE GASKET IS PROPERLY SEATED**
6. Remove the splice cover from the bollard. Make power and ground connection using UL approved connectors.