

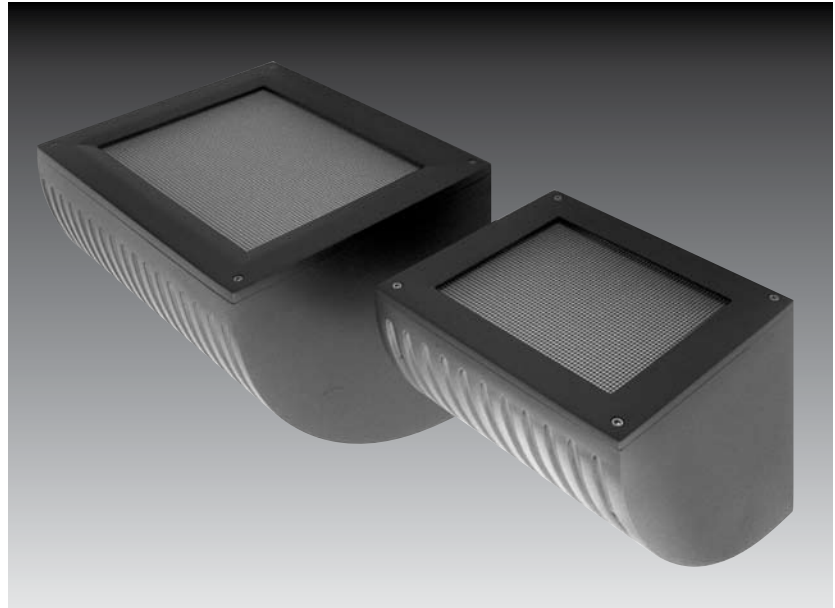
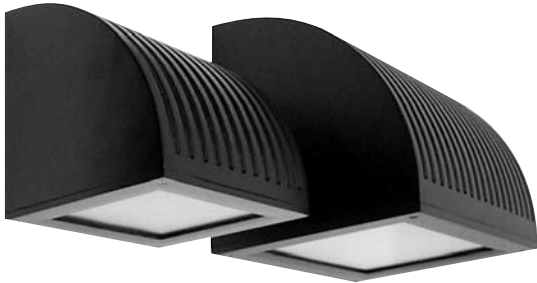
Building Mount

Corridor

Walkways

Accent

Building Entrances



Specifications



Certifications The fixture shall be ETL and CETL listed for wet location. Also meets IP65 standard.

Ballast Housing Cast aluminum.

Lens Frame Cast aluminum mounted to ballast housing with stainless steel screws.

Lens The lens shall be clear tempered glass (BL-80), optional clear tempered prismatic with spot and flood reflector. The lens shall be clear tempered glass (BL-81).

Reflector The reflector shall be an adjustable (40°) asymmetric reflector (BL-81). Optional spot and flood reflectors available.

Up/Down Mounting Each fixture can be mounted in an upward or downward orientation.

Finish BK-BZ-WH-GR-GY-NA thermoset polyester powder coat which is electrostatically applied and bonded by heat fusion thermosetting. CC available upon request.

PROJECT
FIXTURE TYPE
CATALOG#

 Some luminaires use fluorescent or high intensity discharge (HID) lamps that contain small amounts of mercury. Such lamps are labeled "Contains Mercury" and/or with the symbol "Hg." Lamps that contain mercury must be disposed of in accordance with local requirements. Information regarding lamp recycling and disposal can be found at www.lamprecycle.org

Product Order Guide

Series	Max Watts	Lamp Type	Voltage ¹	Lens	Finish ¹	Options
BL-80	26 CFT	CFT ²	120	PG Prismatic Tempered Glass	BK Black	CG Clear Tempered Glass
	32 CFT	CFT ²	208	CG Clear Tempered Glass (standard)	BZ Bronze	SPT Spot 1V1H T6 Only
	42 CFT	CFT ²			WH White	FLD Flood 3V3H T6 Only
	50 HPS	E17			GR Green	PG Prismatic Tempered Glass
	70 HPS	E17	240		NA Natural Aluminum	ADJ Adjustable Asymmetric
	50 MH	E17			GY Gray	SPT Spot 1V1H
	70 MH	E17			CC Custom Color	FLD Flood 3V3H
	39 MH	T6			PCC Photo Control	EMG ⁴ Emergency Battery Backup
	70 MH	T6	277			
	BL-81	42 CFT	CFT ²		PG Prismatic Tempered Glass CG Clear Tempered Glass (standard)	
(2) 42 CFT		CFT ²				
100 MH		E17				
150 MH		E17				
150 MH		T6				
LED	Titan 25WW ³		120-277	25°, 45° Warm White (3050°K)		
	Titan 25CW ³		120-277	25°, 45° Cool (Daylight) White (4700°K)		

1 Consult factory for other colors and voltages

2 CF = single biax, CFQ = double biax, CFT = triple biax

3 25W Titan from Lamina

4 BL-80 requires remote EMG. 750 lumens output for 30 minutes, -20F start temperature. 10' remote distance lamp to backup.

Example: BL-80-70MH-E17-240-PG-BK

Luminaire Dimensions

Luminaire	A		B		C		Weight	
	Inch	mm	Inch	mm	Inch	mm	lbs.	kg
BL-80	9.00	229	8.75	222	9.75	248	12	5.4
BL-81	12.00	305	12.50	318	14.50	368	33	14.9

