

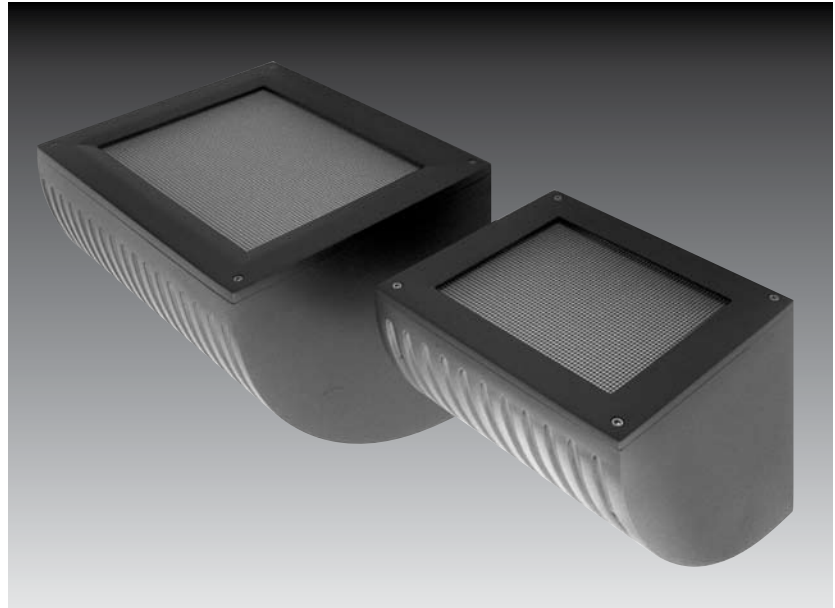
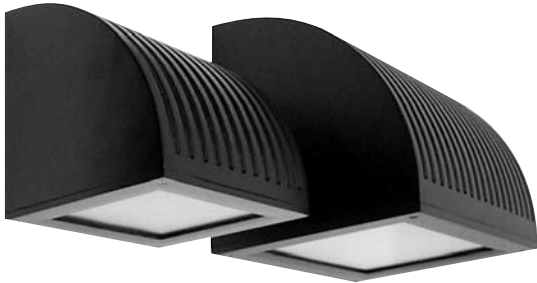
**Building Mount**

**Corridor**

**Walkways**

**Accent**

**Building Entrances**



### Specifications



**Certifications** The fixture shall be ETL and CETL listed for wet location. Also meets IP65 standard.

**Ballast Housing** Cast aluminum.

**Lens Frame** Cast aluminum mounted to ballast housing with stainless steel screws.

**Lens** The lens shall be clear tempered prismatic glass (BL-80), optional clear tempered with spot and flood reflector. The lens shall be clear tempered glass (BL-81).

**Reflector** The reflector shall be an adjustable (40°) asymmetric reflector (BL-81). Optional spot and flood reflectors available.

**Up/Down Mounting** Each fixture can be mounted in an upward or downward orientation.

**Finish** BK-BZ-WH-GR-GY-NA baked enamel standard, other colors available.

<b>PROJECT</b>
<b>FIXTURE TYPE</b>
<b>CATALOG#</b>

 Some luminaires use fluorescent or high intensity discharge (HID) lamps that contain small amounts of mercury. Such lamps are labeled "Contains Mercury" and/or with the symbol "Hg." Lamps that contain mercury must be disposed of in accordance with local requirements. Information regarding lamp recycling and disposal can be found at [www.lamprecycle.org](http://www.lamprecycle.org)

## Product Order Guide

Series	Max Watts	Lamp Type	Voltage <sup>1</sup>	Lens	Finish <sup>1</sup>	Options
BL-80	42 CFT	CFT <sup>2</sup>	120	PG Prismatic Tempered Glass	BK Black	CG Clear Tempered Glass
	70 HPS	E17	208	CG Clear Tempered Glass	BZ Bronze	SPT Spot 1V1H T6 Only
	70 MH	E17	240		WH White	FLD Flood 3V3H T6 Only
	70 MH	T6	277		GR Green	PG Prismatic Tempered Glass
BL-81	175 MH	E17		CG Clear Tempered Glass	NA Natural Aluminum	ADJ Adjustable Asymmetric
	150 MH	T6			GY Gray	SPT Spot 1V1H
	150 HPS	E17			CC Custom Color	FLD Flood 3V3H
	18 LPS	T17				PCC Photo Control
	(2) 42 CFT	CFT <sup>2</sup>				EMG Emergency Battery Backup (BL-81 only)
LED	Titan25WW	CUS3 <sup>3</sup>	120/277	10,25,30,45	Warm White (3050K)	
	Titan25CW	CUS3 <sup>3</sup>	120/277	10,25,30,45	Cool (Daylight) White (4700K)	
	Titan25FIX	CUS3 <sup>3</sup>	120/277	10,25,30,45	Fixed Color Red, Green, Blue, Amber	

<sup>1</sup> Consult factory for other colors and voltages

<sup>2</sup> CF = single biax, CFQ = double biax, CFT = triple biax

<sup>3</sup> The CUS3 uses a 25W Titan from Lamina.

### Example: BL-80-70MH-E17-240-PG-BK

## Luminaire Dimensions

Luminaire	A		B		C		Weight	
	Inch	mm	Inch	mm	Inch	mm	lbs.	kg
BL-80	9.00	229	8.75	222	9.75	248	12	5.4
BL-81	12.00	305	12.50	318	14.50	368	33	14.9

