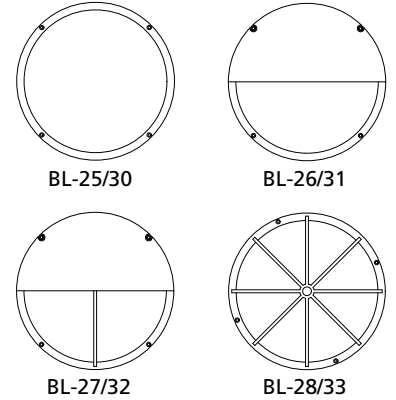


### INSTALLATION SHEET

#### Safety, Warnings and Suggestions

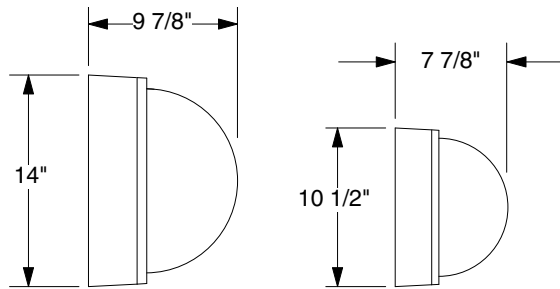
- <sup>1</sup> **Care** should be taken not to position fixtures in locations where bare skin can come into contact with the potentially high temperatures on the lens.
- <sup>2</sup> **Make** sure that electrical power is disconnected before any work is performed.
- <sup>3</sup> **All** gaskets and sealing surfaces must be kept clean during installation.
- <sup>4</sup> **All** wiring and installation should meet local, state and national electrical codes.
- <sup>5</sup> **Install** correct lamp type and wattage.



P#32A39891

© 2005 - 2008 ALLSCAPE. All rights reserved.  
 ALLSCAPE is a registered trademark of Philips.

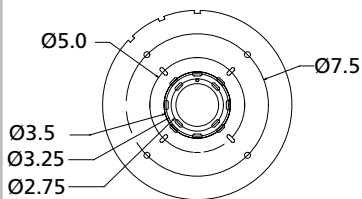
Due to a program of continuous improvement, ALLSCAPE reserves the right to make any variation in design or construction to the equipment described.



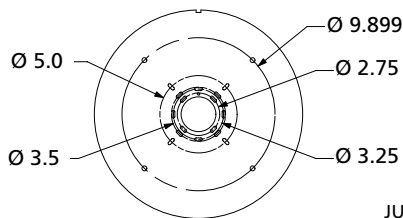
BL-30 THRU 33

BL-25 THRU 28

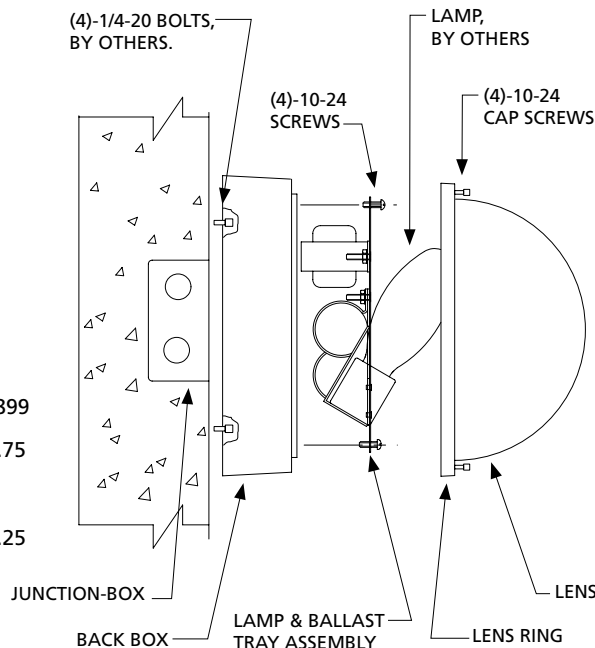
TYPICAL FIXTURE DIMENSIONS



BL-25 THRU 28  
MOUNTING DETAIL



BL-30 THRU 33  
MOUNTING DETAIL



TYPICAL WALL INSTALLATION

1. Remove the fixture from the box. Remove the lens and lens ring by loosening (4)-10-24 cap screws. Remove the ballast tray assembly by loosening (4)-10-24 screws.
2. Secure the back box to the wall with (4)-1/4-20 bolts or to the junction box with 8-32 screws, hardware by others. Make power and ground connection using UL approved connectors at the Junction-box (J-box by others). Reinstall the ballast tray with the (4)-10-24 screws provided
3. (LAMP INSTALLATION) Install the correct lamp type and wattage. Reinstall the lens and lens ring. Tighten the (4)-10-24 cap screws.